

What are Specialized Geriatric Services?

Specialized Geriatric Services (SGS) are defined as a comprehensive, coordinated system of health services that carry out early identification, screening and comprehensive assessment; diagnosis; care planning, intervention and treatment; and support transitions for older adults living with complex health conditions, including frailty and dementia. These services are provided across the continuum of care by interdisciplinary teams with expertise in care of older adults. SGS is inclusive of Geriatric Medicine, Geriatric Psychiatry, Seniors Mental Health, Care of the Elderly and Integrated Geriatric Teams.

SGS programs are led by health professionals who have training specific in the care of older adults, and who provide direct care to individuals who require expert assessment and treatment of complex, and often interacting, health conditions (sometimes referred to as frailty). These experts may support other health system partners in their care of older adults living with moderate or lower complexity. Care in SGS is focused on the provision of health and social care through integrated models. SGS are central to a health system that can respond effectively to the needs of an ageing population. These programs contribute to desired system outcomes such as preventing avoidable emergency department use, hospitalization, alternate level of care and premature institutionalization. The expert care provided in SGS programs also positively impacts older adults directly by optimizing functional ability, independence, and quality of life, and by preventing avoidable decline.

What do Specialized Geriatric Services do?

SGS are organized to support the delivery of evidence informed care and work in collaboration with various partners, including older adults living with complexity and frailty and their care partners. Services include:



Multidisciplinary, collaborative (interprofessional) teams



Integrated specialized geriatric expertise



Comprehensive geriatric assessment and person-centred care planning



Older person and care partner engagement, and tailored treatments and interventions



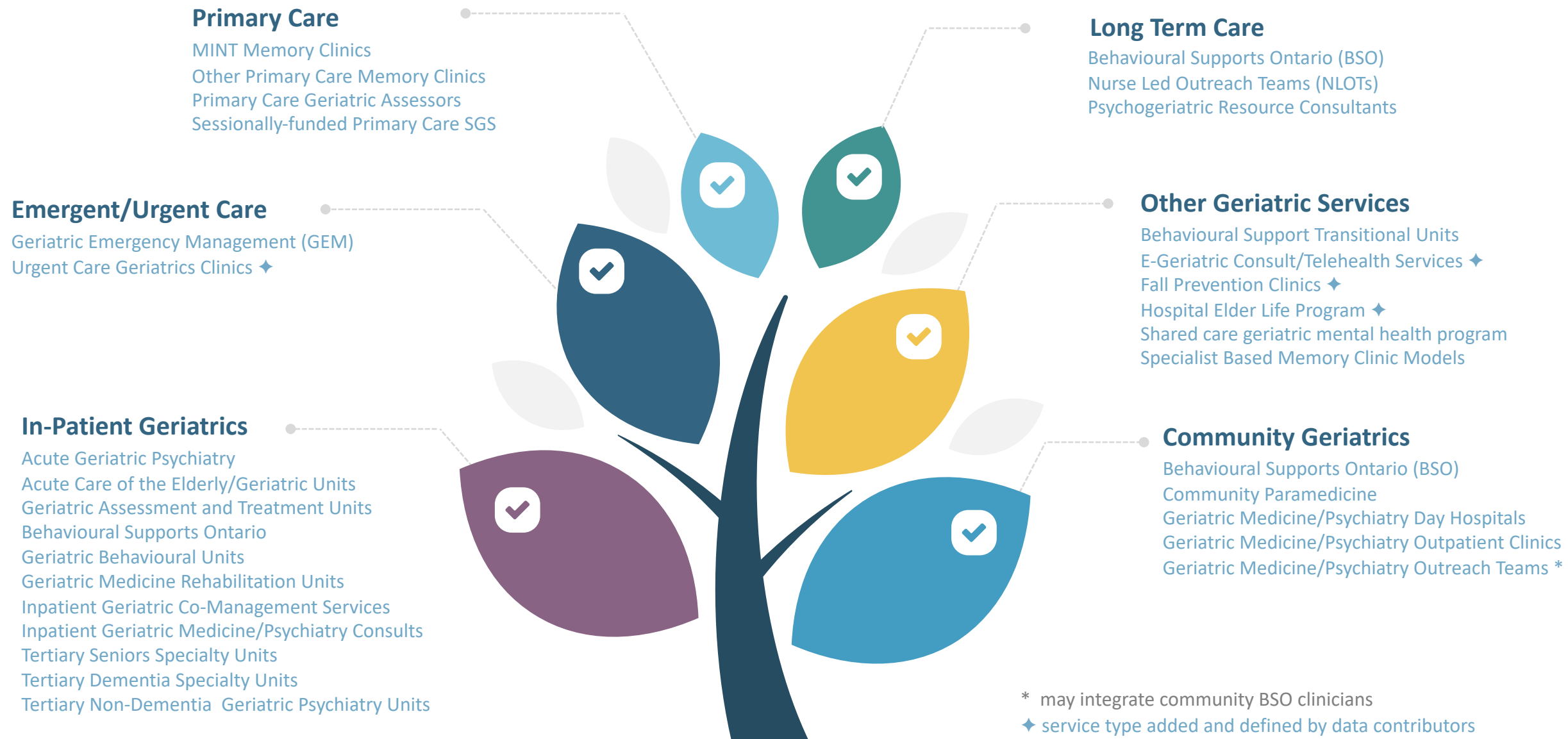
Equitable & culturally appropriate care



Evaluation

In addition to focusing on what matters most for older adults and their care partners, SGS focus on the following domains of care:

- Cognition
- Social Engagement
- Mobility & Falls
- Skin Integrity
- Polypharmacy
- Nutrition & Hydration
- Delirium
- Function
- Continence
- Pain
- Mood & Mental Health
- Sleep



* may integrate community BSO clinicians
♦ service type added and defined by data contributors