

What are Specialized Geriatric Services?

Specialized Geriatric Services (SGS) are defined as a comprehensive, coordinated system of health services that carry out early identification, screening and comprehensive assessment; diagnosis; care planning, intervention and treatment; and support transitions for older adults living with complex health conditions, including frailty and dementia. These services are provided across the continuum of care by interdisciplinary teams with expertise in care of older adults. SGS is inclusive of Geriatric Medicine, Geriatric Psychiatry, Seniors Mental Health, Care of the Elderly and Integrated Geriatric Teams.

SGS programs are led by health professionals who have training specific in the care of older adults, and who provide direct care to individuals who require expert assessment and treatment of complex, and often interacting, health conditions (sometimes referred to as frailty). These experts may support other health system partners in their care of older adults living with moderate or lower complexity. Care in SGS is focused on the provision of health and social care through integrated models. SGS are central to a health system that can respond effectively to the needs of an ageing population. These programs contribute to desired system outcomes such as preventing avoidable emergency department use, hospitalization, alternate level of care and premature institutionalization. The expert care provided in SGS programs also positively impacts older adults directly by optimizing functional ability, independence, and quality of life, and by preventing avoidable decline.

What do Specialized Geriatric Services do?

SGS are organized to support the delivery of evidence informed care and work in collaboration with various partners, including older adults living with complexity and frailty and their care partners. Services include:



Multidisciplinary, collaborative (interprofessional) teams



Integrated specialized geriatric expertise



Comprehensive geriatric assessment and person-centred care planning



Older person and care partner engagement, and tailored treatments and interventions



Equitable & culturally appropriate care



Evaluation

In addition to focusing on what matters most for older adults and their care partners, SGS focus on the following domains of care:

- Cognition
- Social Engagement
- Mobility & Falls
- Skin Integrity
- Polypharmacy
- Nutrition & Hydration
- Delirium
- Function
- Continence
- Pain
- Mood & Mental Health
- Sleep

Primary Care

MINT Memory Clinics
Other Primary Care Memory Clinics
Primary Care Geriatric Assessors
Sessionally-funded Primary Care SGS

Long Term Care

Behavioural Supports Ontario (BSO)
Nurse Led Outreach Teams (NLOTs)
Psychogeriatric Resource Consultants

Emergent/Urgent Care

Geriatric Emergency Management (GEM)
Urgent Care Geriatrics Clinics ♦

Other Geriatric Services

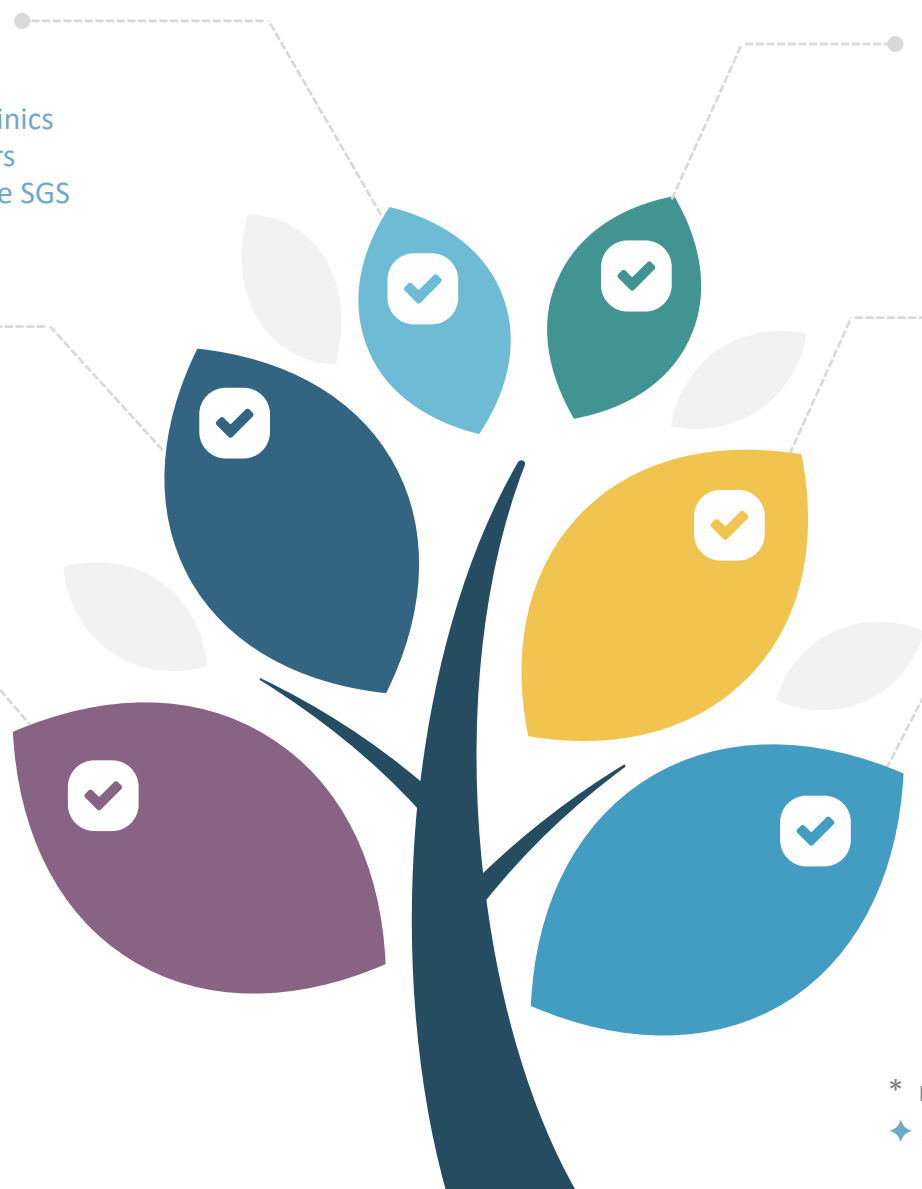
Behavioural Support Transitional Units
E-Geriatric Consult/Telehealth Services ♦
Fall Prevention Clinics ♦
Hospital Elder Life Program ♦
Shared care geriatric mental health program
Specialist Based Memory Clinic Models

In-Patient Geriatrics

Acute Geriatric Psychiatry
Acute Care of the Elderly/Geriatric Units
Geriatric Assessment and Treatment Units
Behavioural Supports Ontario
Geriatric Behavioural Units
Geriatric Medicine Rehabilitation Units
Inpatient Geriatric Co-Management Services
Inpatient Geriatric Medicine/Psychiatry Consults
Tertiary Seniors Specialty Units
Tertiary Dementia Specialty Units
Tertiary Non-Dementia Geriatric Psychiatry Units

Community Geriatrics

Behavioural Supports Ontario (BSO)
Community Paramedicine
Geriatric Medicine/Psychiatry Day Hospitals
Geriatric Medicine/Psychiatry Outpatient Clinics
Geriatric Medicine/Psychiatry Outreach Teams *



* may integrate community BSO clinicians

♦ service type added and defined by data contributors